

A FULL SERVICE CONTRACT MANUFACTURER

SHEET METAL FABRICATION-DIE CAST-EXTRUSION-MACHINING-CABLE ASSEMBLIES-PLASTIC COMPONENTS

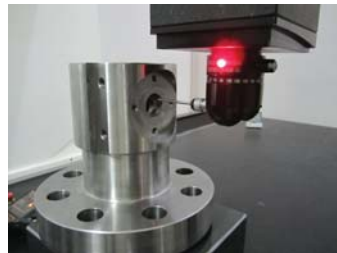
An Engineering Driven Company that Provides

- Engineering/Design Services from Your Final or Preliminary Design, Sample or Just an Idea
- Total Control/Management of the Manufacturing Within Approved Factories
- Turn Key Services That Provides Complete or Partial Box Builds and Kitted Components to Include but Not Limited to Bolting/Fasteners, Springs, Machined, Sheet Metal and/or Plastic Components and Instruction Manuals



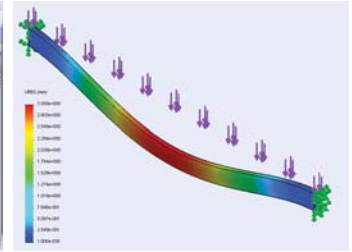
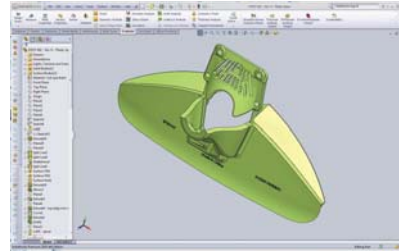
Manufacturing (Ionthis CONTROLS/MANAGES)

- Factory Selection
 - > Audit and Qualify
 - Ability and Capacity
 - Qualify Personnel
 - Procedures are in Place and **Followed** (ISO9001...)
 - Training Procedures and Records
 - Quality of Life
 - > Set Up/Write Quality Plans & Manufacturing Procedures
 - > Set Up Cells Just for Our Production if Required
 - > Supply Critical Tooling, Machines and Gaging from the USA
 - > Train and Walk Through First Production Runs
- Materials
 - > Verify CMTRs are the Correct Material (ASTM, ANSI, Etc.) Purchased, not a Chinese "Assumed" Equal
- If Heat Treat is Required, We Write a Procedure Per Applicable Code
- If Material is Critical, Outside Testing Performed at a Lab



MRP/How to feed the our customer's factory

- Single part delivered monthly
- 1-2 Small Skids to Fulfill Customers Inventory Requirements
- Consolidated Containers from Multiple Factories/Process Shipped Weekly
- Project Plus Inventory to Fill a Container Reducing Shipping Cost
- Retail Single or Boxed Kits Packed and Shipped to Distribution



"We Engineer for Manufacturing IN CHINA"

- Materials are Different in China, We Engineer the Correct Equivalent, We Prevent and Not Overlooked the Examples Below
 - > Standard Chinese Steel is 50% of the Strength of American
 - > Gauge Metal Not Available, 14 Gauge $\approx 1.897\text{mm}$, China Substitutes 1.8-1.7
- Drawing Notes/Terms are not Clear enough to Chinese When Directly Translated, We Add More Detail for Clarity Preventing Possible Errors/Added Cost
- Many Times American Processes/Standards Here are Unknown or Not Available in China, We Specify Clearly and Clearly Explain in Chinese
- We Will Redesign to Box Builds/Partial Assemblies to Improve Compactness to Save Shipping/Assembly Cost. Bulky Fabricated Designs Redesigned for a Smaller Footprint, (Shipping Volume\$\$s) and Allow Ease if Assembly Upon Arrival
- Might Split Production into 2 Factories to Reduce Cost But Consolidate for Shipping

Ionthis Inspection

- In-Process Quality Control, IPQC, Standard
- Minimum Standard MIL-STD-105
- Critical Parts Inspection if Required
 - > CMM 15%-100% Critical Dimension Depending on Part/Customer
 - > RT, MT & LP if Needed
- Visual Inspection 50%-100%
- Ionthis Inspectors
 - > Perform Audits
 - > Perform 5%-30% Random Test
 - > Visual Test 5%-30%
 - > VERIFIABLE DOCUMENTATION REQUIRED/INSPECTED



Packing and Logistics

- We Design PACKAGING for PROTECTION and Ease of Receiving at our Customers
- A Single box, Multiple Boxes Palletized and/or Containerized
- Bagging, Tagging, Labels, Bar Coding, Moisture and Rust prevention, etc.
- Retail Printing/Packaging and Instruction Manuals if Needed
- Inspection During packing and at Completion
- Price Delivered to Your Door(s), to Distribution, or FCA, FOB and/or Others

Ionthis was formed by engineering professionals experienced in manufacturing USA products in China as a way for small to medium companies to gain access to manufacturing in China to reduce cost or to extend manufacturing capabilities and/or capacity without sacrificing quality. Today Ionthis is a FULL SERVICE CONTRACT MANUFACTURER and is a USA owned and operated company in Houston Texas USA with offices in Shenzhen and Shanghai China that specialize in designing and contract manufacturing of components and utilizing the cost savings in manufacturing components or finished products and assemblies in China.

Your Parts Manufactured the Way You Want, Finished Including:

- Painted, Plated, Anodized or Powder Coated
- Silk Screen/Printing as Required
- Component Parts, Kits, Semi or Complete Box Builds
- Complete Engineering/Design Services
- Low Cost Small Quantities
- Package for Retail Distribution Including Printing, Blister Packs and Bar Codes



Sheet Metal Fabrication

- Materials Such as Steel, Stainless Steel, Aluminum, Copper or Nickel Alloys
- CNC Punch (QTY 5-1000), No Tooling Cost
- Stamping Punch (QTY 250+), Lower Per Part Cost
- Progressive Die (QTY 10K+), Reduce Cost for Higher Quantity Runs
- Welding (MIG, TIG, Spot)
- Available Complete with PEMs, Fasteners and Hardware
- Enclosures (up to IP67), Brackets, Components, Panels & Chassis



Die Casting

- Automatic /Robotic Die Cast
- Manual Die Cast with Individual Die Cast Crucible Furnaces
- Small to Large Die Cast Production Runs
- Finished Including Machining, Plating and/or Powder Coating
- Enclosures, Housings, Face Plates or Components

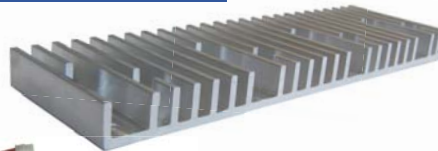


Machining & Forging

- Manual & CNC Lathes CNC Vertical and Horizontal Milling Machines & VTLs
- Certified NDE, LP, MP and RT/(SNT-TC-1A)
- CMM Inspection
- Materials Such as ASTM A105, ASTM A182 F11, F22, F9, F316, F304, 3140/4130, 4340, 17-4PH, GR660/A286, Inconel/Incolloys, Aluminum, Brass & Titanium
- Supply and Finish Machining of Castings and Forgings
- Open and Closed Die Forging

Extrusions

- Aluminum
- As Extruded or Machined & Finished
- Heat Sinks Available With Thermal Pads & EMI
- Presses from 300-3500 Ton
- Will Do Small Production Run on Component Parts
- Build Our Own Mold, Lower Cost
- Enclosures, Heat Sinks & Components



Cable Assemblies & Wire Harnesses

- Simple Point-to-Point Assemblies to Very Complex Multi-Cable Assemblies
- Cable Television, Fiber Optics, Medical Instruments, Telecommunications, Valve Actuation & Industrial Markets
- RF, Ribbon & Over Mold Cable Assemblies Simple Jumpers, Power Cords, Fiber Optics Patch Cords & Splitters

Plastic Component Manufacturing

- Injection Molded Thermoplastics Such as Polycarbonate (PC), Polyethylene (PE), Polystyrene (Ps), Polypropylene (PP) and Acrylonitrile-butadiene-styrene (ABS)
- Liquid Injection Molding (LIM) of Liquid Silicone Rubber (LSR)
- Multi-Shot Molding, Over-Mold, Multi-Colors, Simple to Complex Shapes

